



Camp Sefh Mack

Cub Scouts

2014 Parent's Guide

2014 Camping:

With the help of Area 34's experienced trainers, you will complete Galaxy Ranger Training! After safely traveling to Planet Hill you will begin your search for missing space ship pieces.

Be warned! This is not a mission for the weak-minded. You will need to utilize your strength, courage, agility, and knowledge to become the best Galaxy Ranger you can be!

Travel to the Area 34 Training and Research Facility to complete your Galaxy Ranger Training and experience a trip of a lifetime with your fellow Galaxy Ranger

Camp Sefh Mack continues its mission to improve your experience through superior programming, in-depth theme experiences, comfort oriented wilderness camping facilities and competent, experienced and enthused staff we plan to provide you and your son with the best camping experience.

Dietary Needs

Please notify us of any special dietary needs or restrictions two weeks before your arrival using the form available online.

Medical Forms

Every participant must provide a copy of their annual health and medical form and a Supplemental Medical Form.

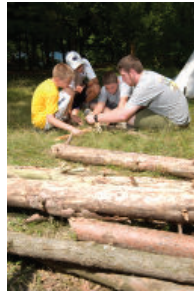
What's Unique About Camp...

- Camp Sefh Mack utilizes a dining hall serving family style meals.
- Camp cycles through themes, this year, we welcome you to the Isle of Yellow Creek as we set sail on the high seas.
- Camp helps develop character, introduce new friends, teach valuable life skills and helps boys discover new interests.
- Campers are assigned to a campsite and stay in platform wall tents, with toilets and hot shower facilities nearby. Adults and youth sleep on cots.
- Homesickness is rare because the program is packed full of activities. If it does happen, the staff is trained and ready to give extra individual attention.
- For your swimming experience, we have beautiful Yellow Creek Lake (no pool).



Aquatics

Yellow Creek provides a unique experience for campers to practice their swimming skills and earn several swimming requirements towards the Swimming Belt Loop. Most importantly, the campers will have the chance to participate in games and other fun water related activities.



Ecology

The Ecology Area will teach campers about the outdoors. The campers will be out on Camp Seph Mack's trails exploring the area. Campers will have the opportunity to complete several requirements for advancement.

Shooting Sports

The BB Gun and Archery Ranges give campers the opportunity to how to safely use BB Guns and bows as well as practice their aim. Campers will be able to earn the BB Gun and Archery Belt Loops here.

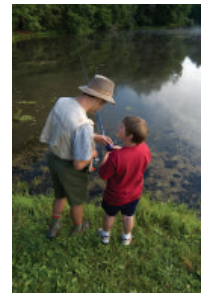
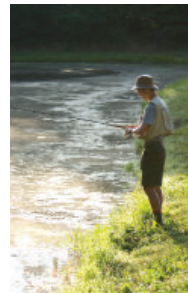
Handicraft

The Handicraft Area provides campers the chance to create multiple art projects to take home.



Sports

The Sports Area is a chance for campers to learn the basic rules to a game, practice, and play with the other campers.

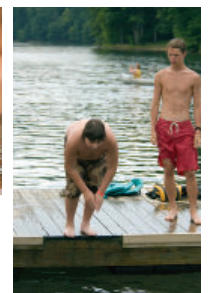
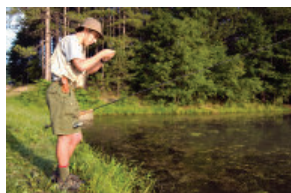


Climbing

This is a chance for all Webelos to climb Camp Seph Mack's Climbing Tower. This will allow campers to grow both physically and mentally with this challenge.

Cub Craft

The Cub Craft Area is where campers will learn several of the most important things about camping and Scouting. Campers will learn about fire safety, knots and lashings, using a map and the basic principals of Boy Scouts.



2013 Camp Seph Mack - Cub Scouts

	Sunday	Monday	Tuesday	Wednesday
6:30 AM		Polar Bear Swim/Nature Hike	Foggy Fish/Nature Hike	Polar Bear Swim/Foggy Fish
7:00 AM		Time Reveille	Reveille	Reveille
7:35 AM		In-Site Flag Raising	In-Site Flag Raising	In-Site Flag Raising
7:45 AM		Waiter's Call	Waiter's Call	Waiter's Call
7:50 AM		Group 1 Flag Ceremony	Group 2 Flag Ceremony	Group 3 Flag Ceremony
8:00 AM		Breakfast	Breakfast	Breakfast
9:00 AM		Program Rotations	Program Rotations	Program Rotations
12:00 PM		Lunch	Lunch	Lunch
		Group 1 Lunch in Scoutcraft	Group 2 Lunch in Scoutcraft	Group 3 Lunch in Scoutcraft
1:00 PM	Arrival at Camp	Siesta	Siesta	Siesta
2:00 PM	Check-in			
	Medical Checks	Program Rotations	Program Rotations	Open Area
	Swim Tests			
	Camp Tour			
	Set up Campsites			
5:00 PM				Family Picnic Dinner
5:45 PM	Waiter's Call	Waiter's Call	Waiter's Call	
5:50 PM	Flag Retreat	Group 1 Flag Ceremony	Group 2 Flag Ceremony	Group 3 Flag Ceremony
6:00 PM	Dinner	Dinner	Dinner	Closing Camp Fire
7:15 PM	Opening Campfire	Vespers Service	Open Program	
8:00 PM				
8:30 PM	Free Time	Free Time	Free Time	
9:00 PM				
10:00 PM	Lights Out	Lights Out	Lights Out	

What Campers Should Bring

- Sneakers/Hiking Shoes
- T-Shirts
- Underwear & Socks
- Jeans
- Long-Sleeve Shirts
- Pajamas
- Shorts
- Sweatshirt or Jacket
- Official Scout Uniform
- Swimsuit
- Towel
- Personal Hygiene items
- Sleeping Bag
- Pillow
- Hat
- Watch
- First Aid Kit
- Pocket Knife
- Sunglasses
- Sunscreen
- Rain Gear
- Insect Repellent (non aerosol)
- Flashlight
- Spending Money
- Fishing Gear
- Camera/Film (optional)

More Camping Opportunities

Visit www.lhc-bsa.org to learn more about these exciting opportunities:

- Winter Weekends
- Beaver Weekend
- Camp Independence

Pack Specific Information

Throughout our history, we have been providing the best quality programs, and have become a home for many units, Scouters, Scouts and staff. This year, we will maintain the commitment to excellence that we are known for, while going above and beyond with several new programs and services.

Delighted that your unit has chosen to take part in this experience, the directors and key leaders are busy planning an incredible program. We have an exceptional group of staff and directors returning, along with some new faces, to ensure we exceed your unit's expectations.